

NOTE:  
 20'-3" AND 40'-0" SHED DORMERS ARE NOT AVAILABLE  
 ON SAME SIDE AS GABLE ENTRY SYSTEM

OPTIONS SHOWN  
 BALCONY  
 OPTIONS AVAILABLE  
 DORMER OPTIONS SHOWN  
 WINDOW FEATURE WALL  
 PLANS AS SHOWN WORKS WITH:  
 BIG HORN 1, 2, 4, 8, 9, & 10  
 BECAUSE OF STAIR DIRECTION.

375 SQ FT (> 5 FT)  
 552 SQ FT TOTAL

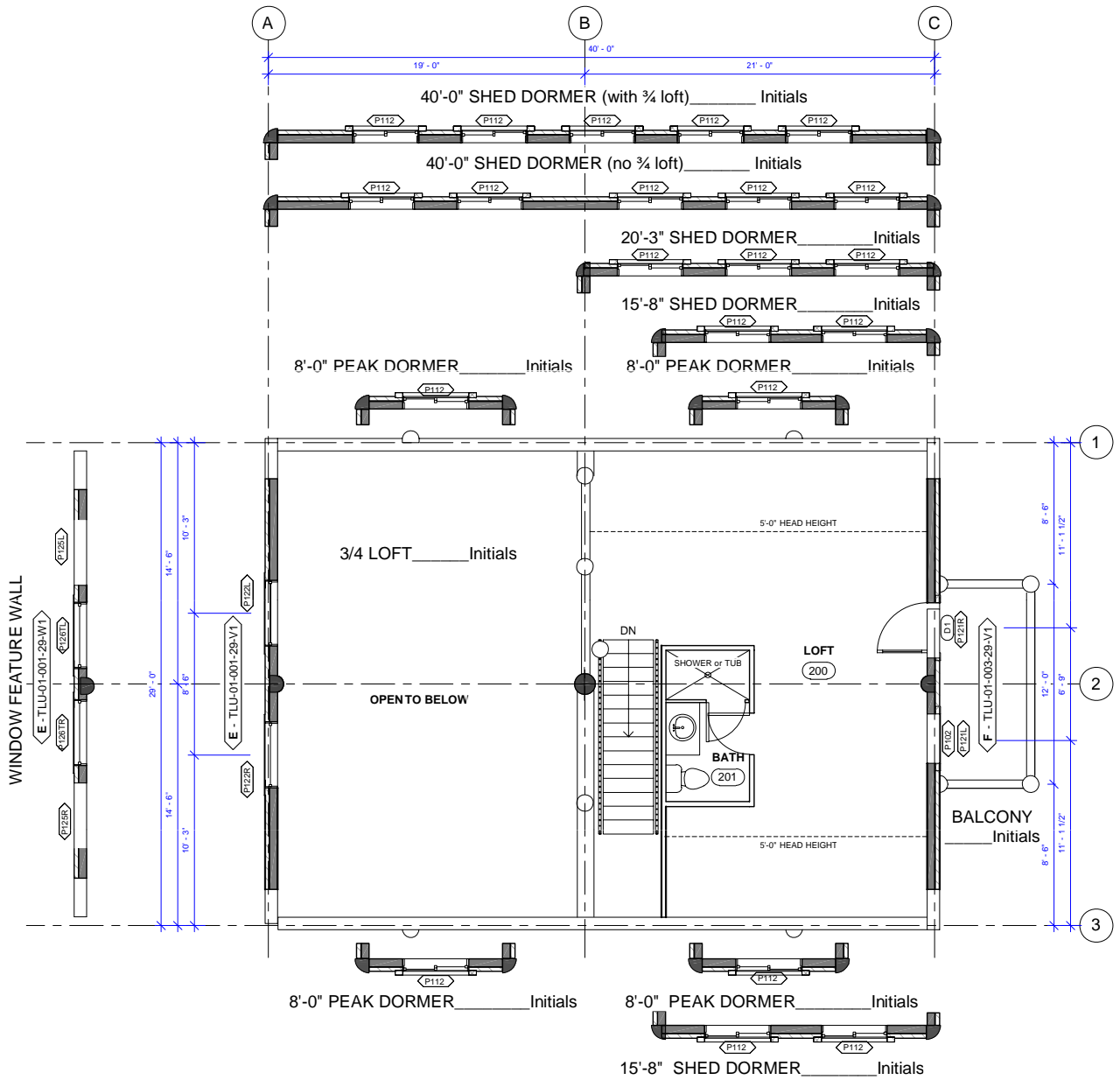


**BIG HORN LOFT 1**

SCALE: 1" = 10'-0"

V. 5.0



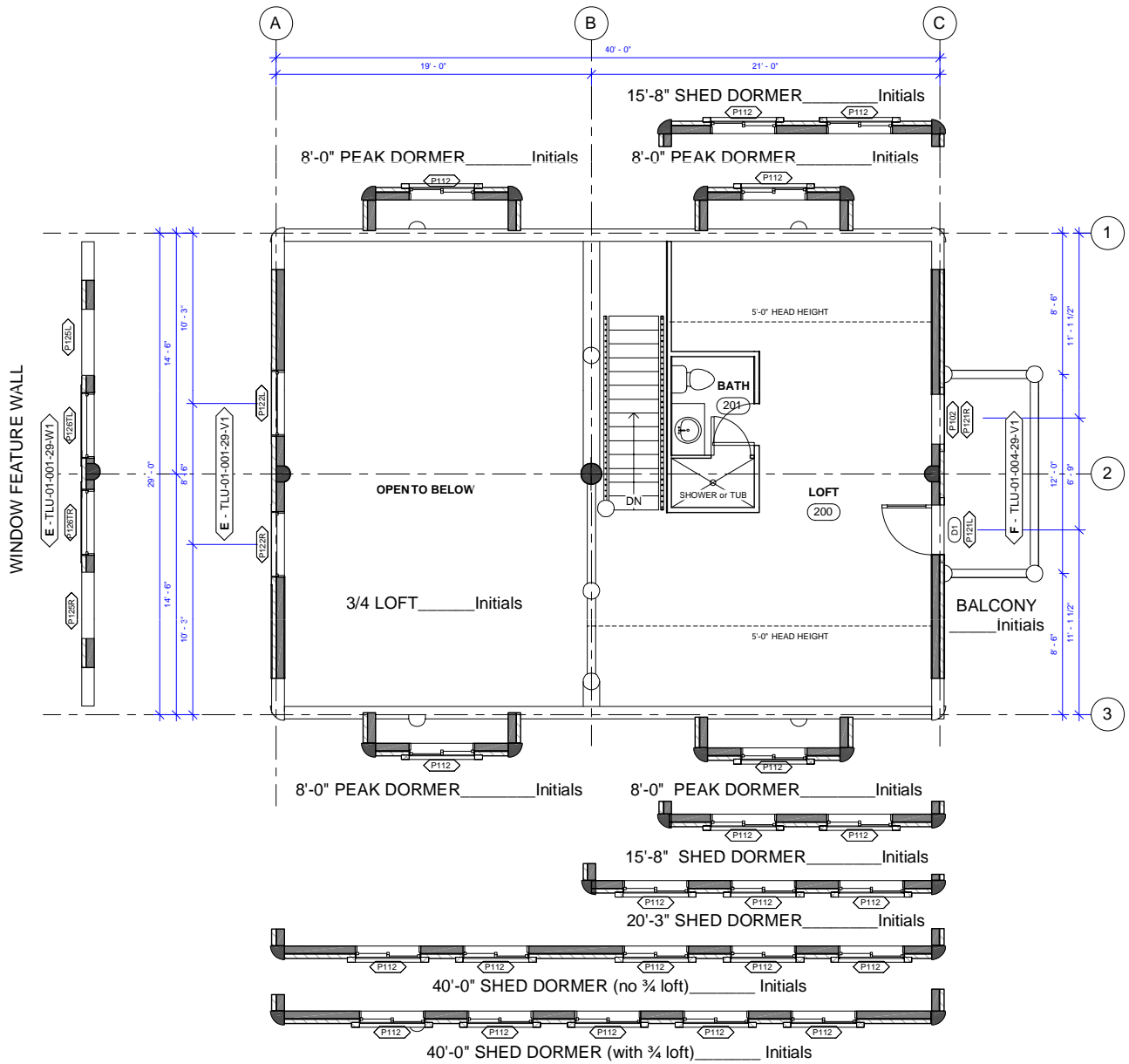


NOTE:  
20'-3" AND 40'-0" SHED DORMERS ARE NOT AVAILABLE  
ON SAME SIDE AS GABLE ENTRY SYSTEM

OPTIONS SHOWN  
BALCONY  
OPTIONS AVAILABLE  
DORMER OPTIONS SHOWN  
WINDOW FEATURE WALL  
PLANS AS SHOWN WORKS WITH:  
BIG HORN 1, 2, 4, 8, 9, & 10  
BECAUSE OF STAIR DIRECTION.

375 SQ FT (> 5 FT)  
552 SQ FT TOTAL

**BIG HORN LOFT 2**  
SCALE: 1" = 10'-0" V. 5.0

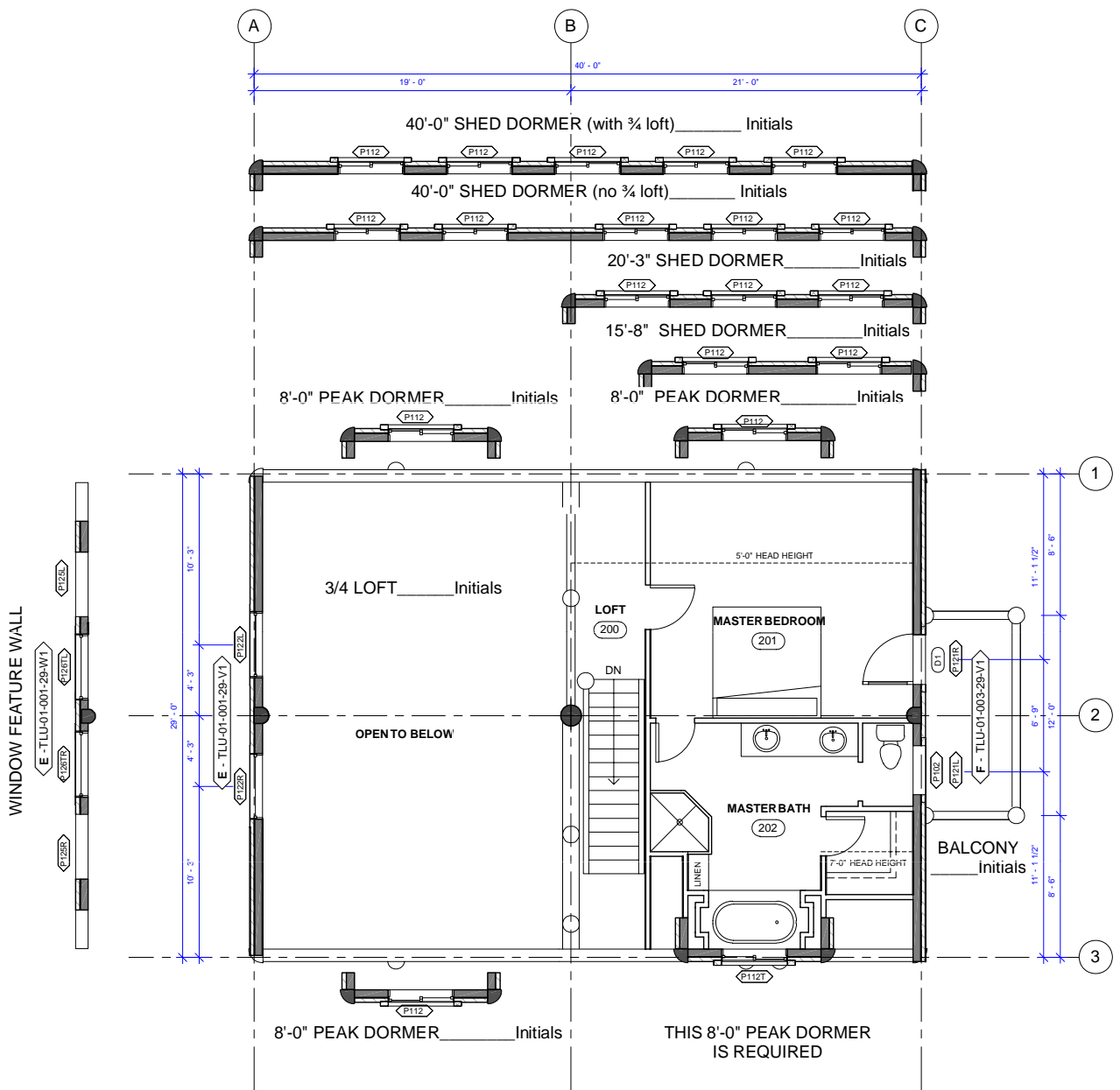


NOTE:  
20'-3" AND 40'-0" SHED DORMERS ARE NOT AVAILABLE  
ON SAME SIDE AS GABLE ENTRY SYSTEM

OPTIONS SHOWN  
BALCONY  
OPTIONS AVAILABLE  
DORMER OPTIONS SHOWN  
WINDOW FEATURE WALL  
PLANS AS SHOWN WORKS WITH:  
BIG HORN 3, 5, 6, & 7 BECAUSE  
OF STAIR DIRECTION.

375 SQ FT (> 5 FT)  
552 SQ FT TOTAL

**BIG HORN LOFT 2M**  
SCALE: 1" = 10'-0" V. 5.0



NOTE:  
20'-3" AND 40'-0" SHED DORMERS ARE NOT AVAILABLE  
ON SAME SIDE AS GABLE ENTRY SYSTEM

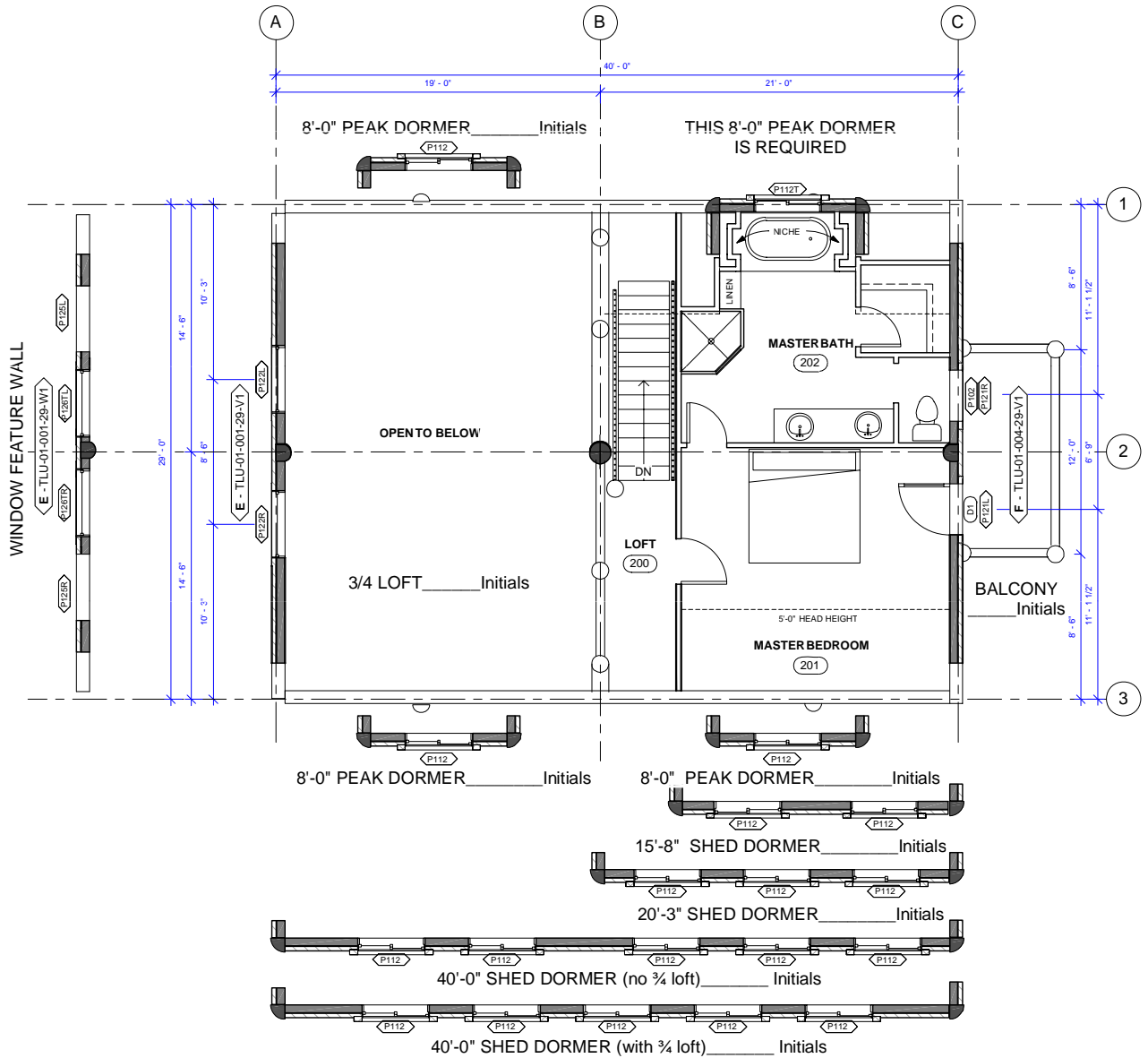
**OPTIONS SHOWN**  
BALCONY  
DORMER

**OPTIONS AVAILABLE**  
DORMER OPTIONS SHOWN  
WINDOW FEATURE WALL  
PLANS AS SHOWN WORKS WITH:  
BIG HORN 1, 2, 4, 8, 9, & 10  
BECAUSE OF STAIR DIRECTION.

409 SQ FT (> 5 FT)  
552 SQ FT TOTAL

**BIG HORN LOFT 3**

SCALE: 1" = 10'-0" V. 5.0

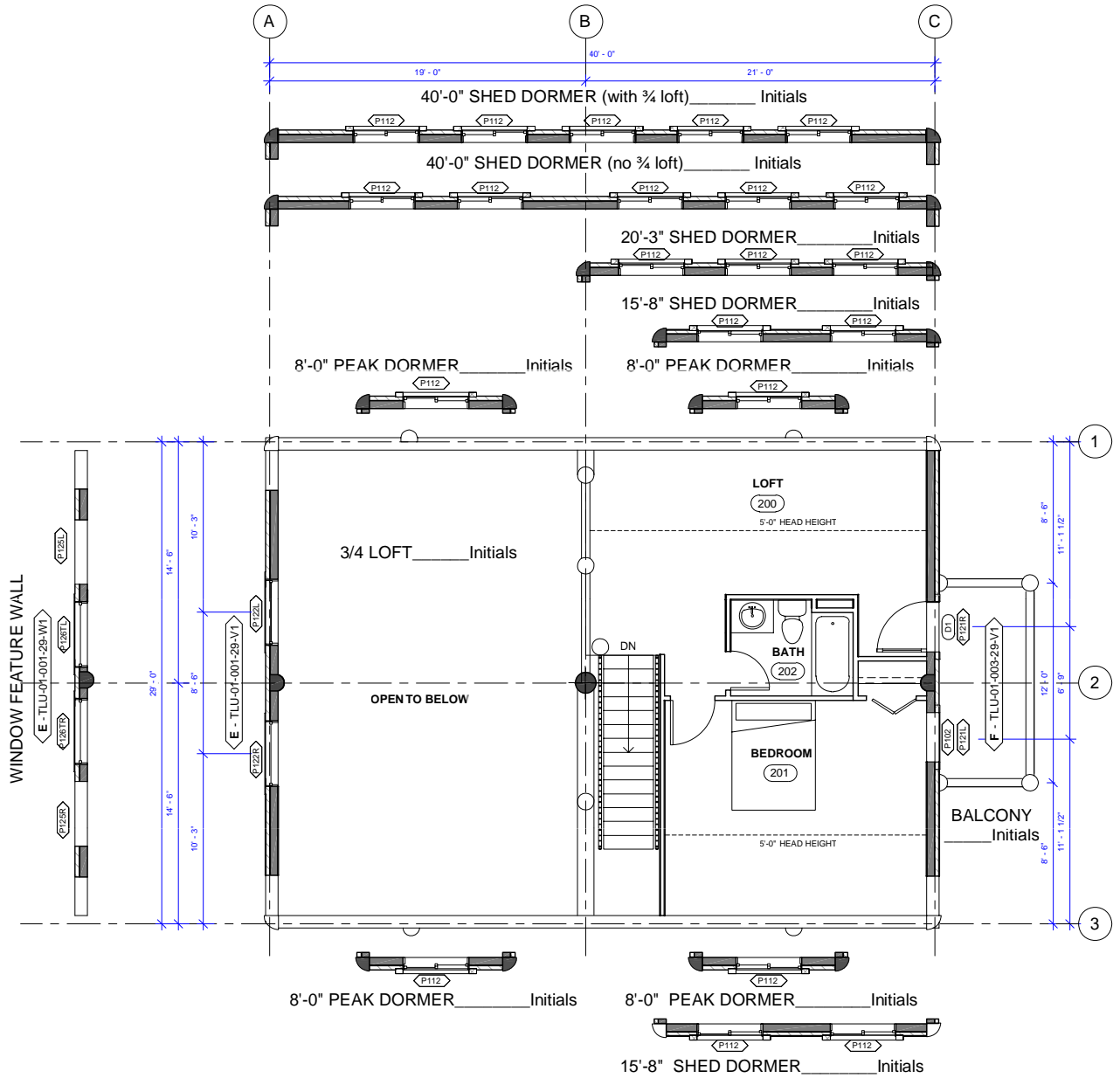


NOTE:  
 20'-3" AND 40'-0" SHED DORMERS ARE NOT AVAILABLE  
 ON SAME SIDE AS GABLE ENTRY SYSTEM

OPTIONS SHOWN  
 BALCONY  
 DORMER SHOWN  
 OPTIONS AVAILABLE  
 DORMER OPTIONS SHOWN  
 WINDOW FEATURE WALL  
 PLANS AS SHOWN WORKS WITH:  
 BIG HORN 3, 5, 6, & 7 BECAUSE  
 OF STAIR DIRECTION.

409 SQ FT (> 5 FT)  
 552 SQ FT TOTAL


**WHISPER  
 CREEK LOG HOMES**  
**BIG HORN LOFT 3M**  
 SCALE: 1" = 10'-0" V. 5.0

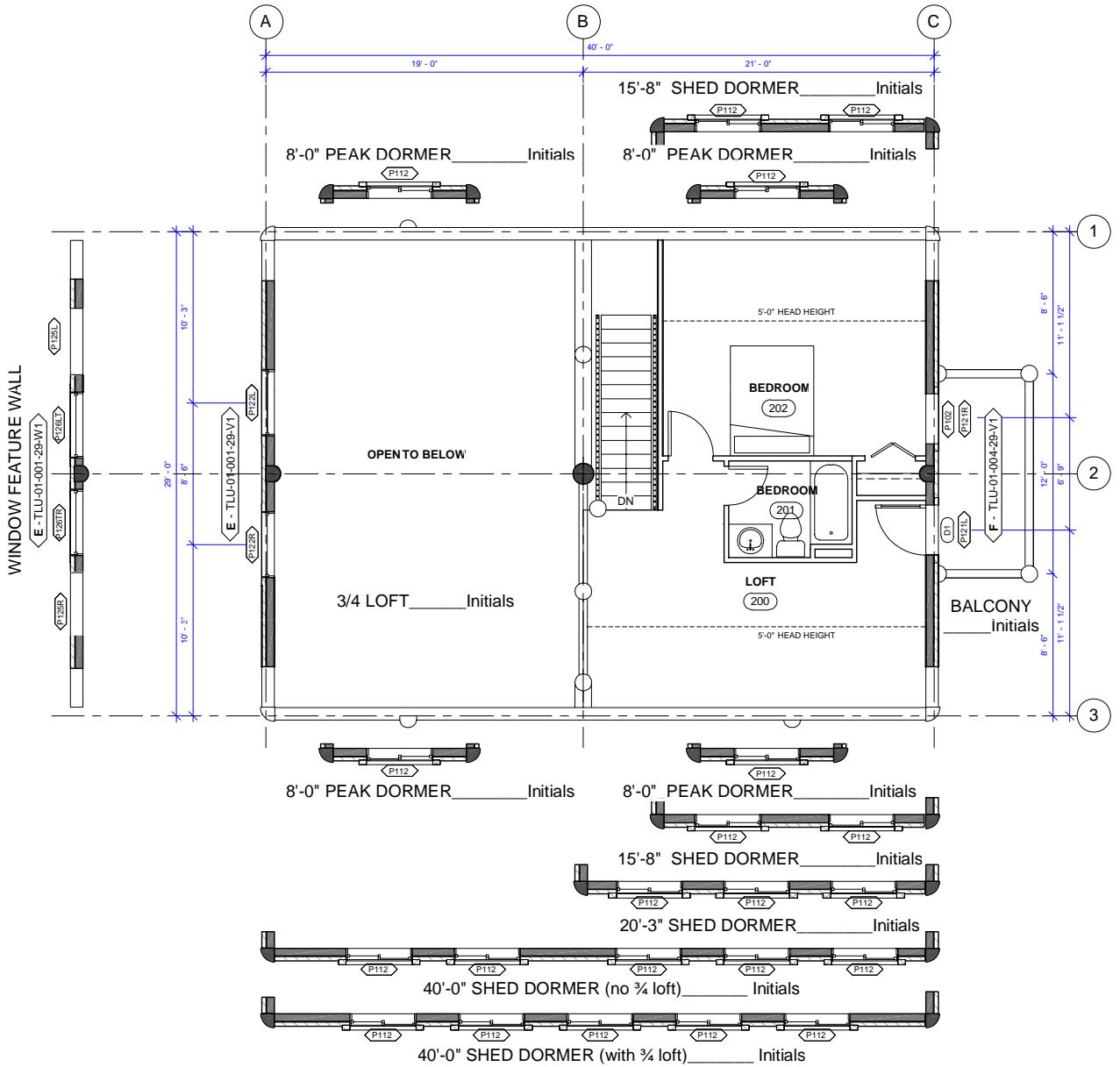


NOTE:  
20'-3" AND 40'-0" SHED DORMERS ARE NOT AVAILABLE  
ON SAME SIDE AS GABLE ENTRY SYSTEM

OPTIONS SHOWN  
BALCONY  
OPTIONS AVAILABLE  
DORMER OPTIONS SHOWN  
WINDOW FEATURE WALL  
PLANS AS SHOWN WORKS WITH:  
BIG HORN 1, 2, 4, 8, 9, & 10  
BECAUSE OF STAIR DIRECTION.

375 SQ FT (> 5 FT)  
552 SQ FT TOTAL

**BIG HORN LOFT 4**  
SCALE: 1" = 10'-0" V. 5.0



NOTE:  
20'-3" AND 40'-0" SHED DORMERS ARE NOT AVAILABLE ON SAME SIDE AS GABLE ENTRY SYSTEM

OPTIONS SHOWN  
BALCONY  
OPTIONS AVAILABLE  
DORMER OPTIONS SHOWN  
WINDOW FEATURE WALL  
PLANS AS SHOWN WORKS WITH:  
BIG HORN 3, 5, 6, & 7 BECAUSE  
OF STAIR DIRECTION.

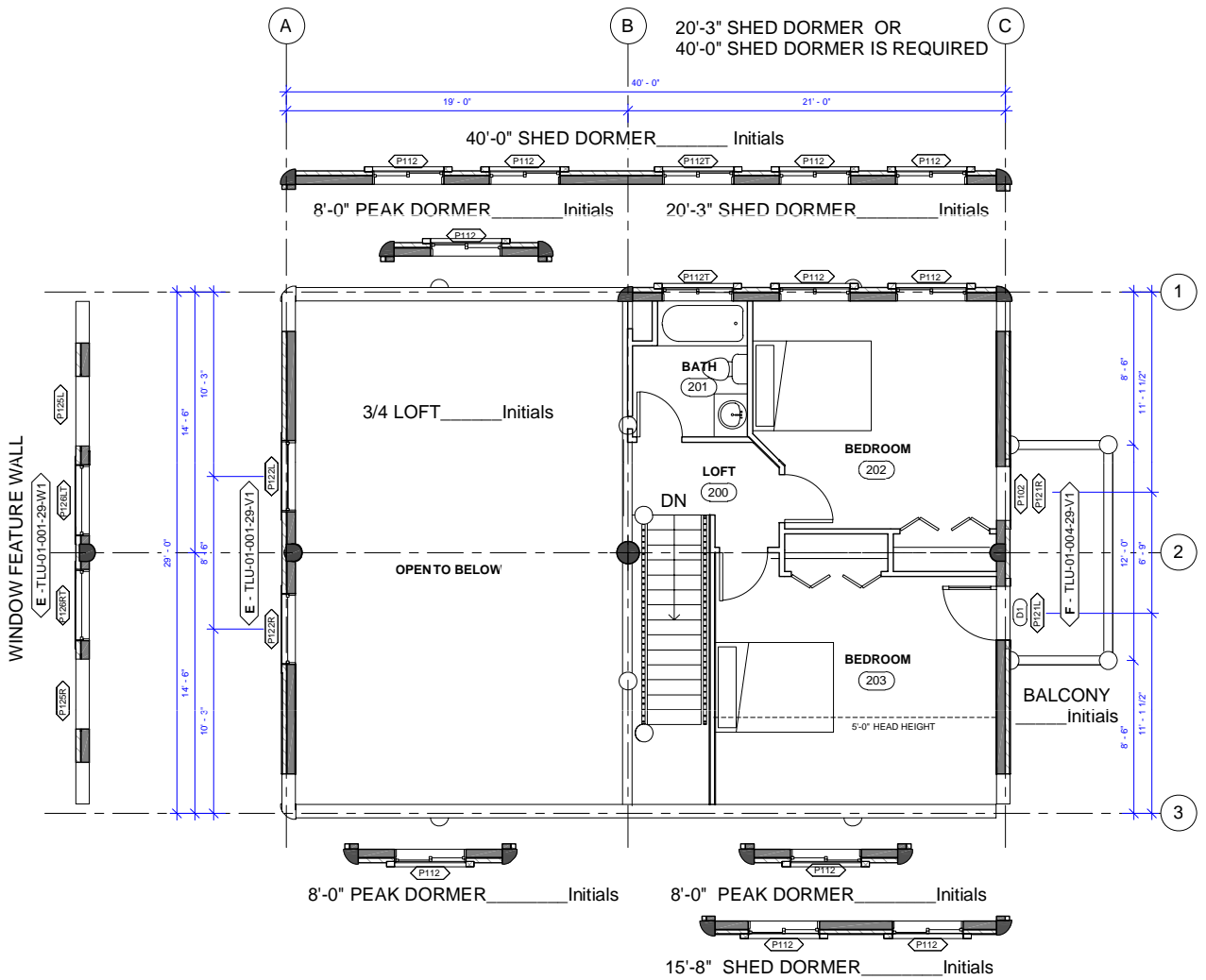
375 SQ FT (> 5 FT)  
552 SQ FT TOTAL

**WHISPER CREEK LOG HOMES**

**BIG HORN LOFT 4M**

SCALE: 1" = 10'-0" V. 5.0





NOTE:  
20'-3" AND 40'-0" SHED DORMERS ARE NOT AVAILABLE  
ON SAME SIDE AS GABLE ENTRY SYSTEM

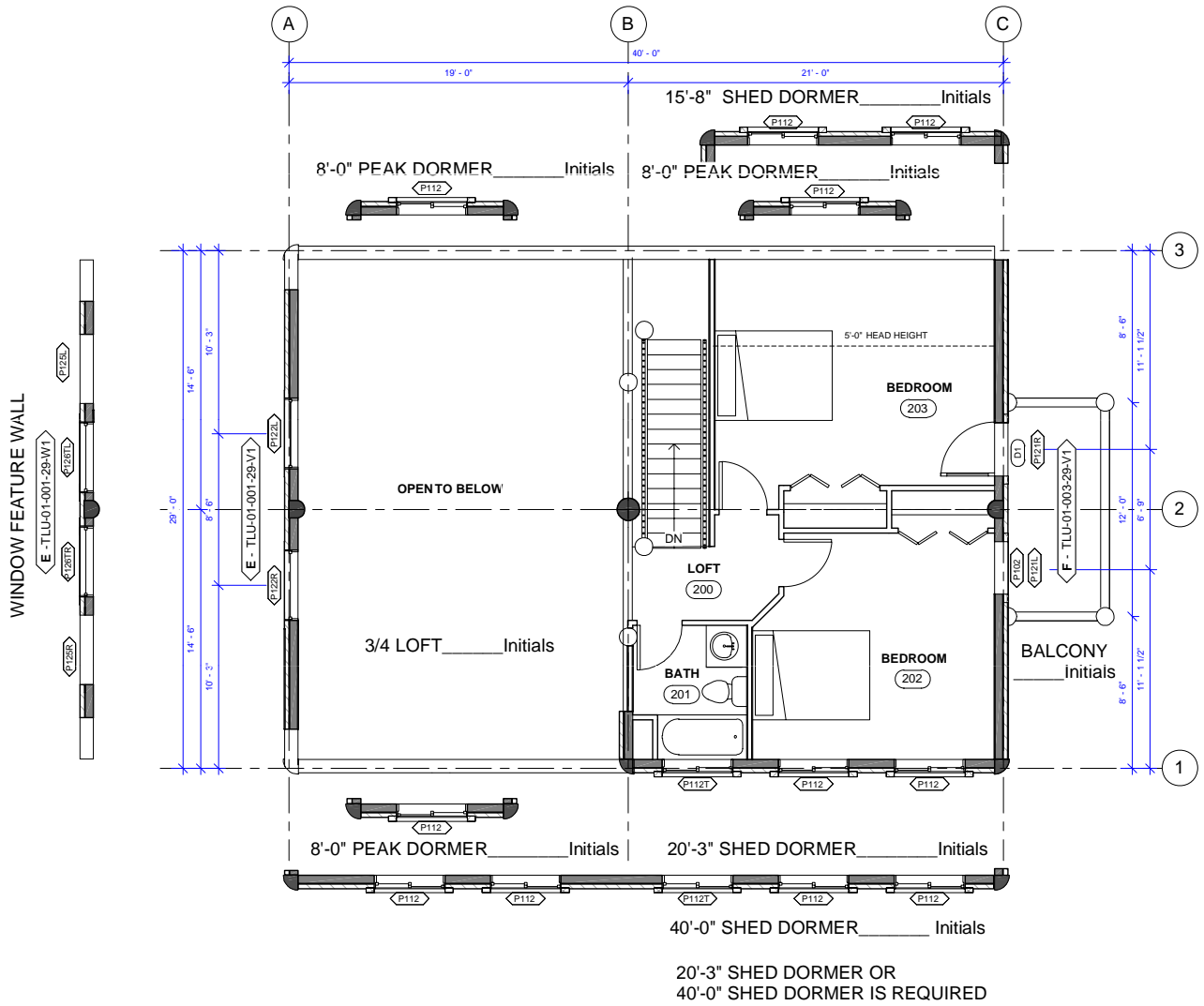
OPTIONS SHOWN  
BALCONY  
DORMER  
OPTIONS AVAILABLE  
DORMER OPTIONS SHOWN  
WINDOW FEATURE WALL  
PLANS AS SHOWN WORKS WITH:  
BIG HORN 1, 2, 4, 8, 9, 10,  
BECAUSE OF STAIR DIRECTION.

467 SQ FT (> 5 FT)  
552 SQ FT TOTAL

**WHISPER  
CREEK LOG HOMES**

**BIG HORN LOFT 5**

SCALE: 1" = 10'-0" V. 5.0

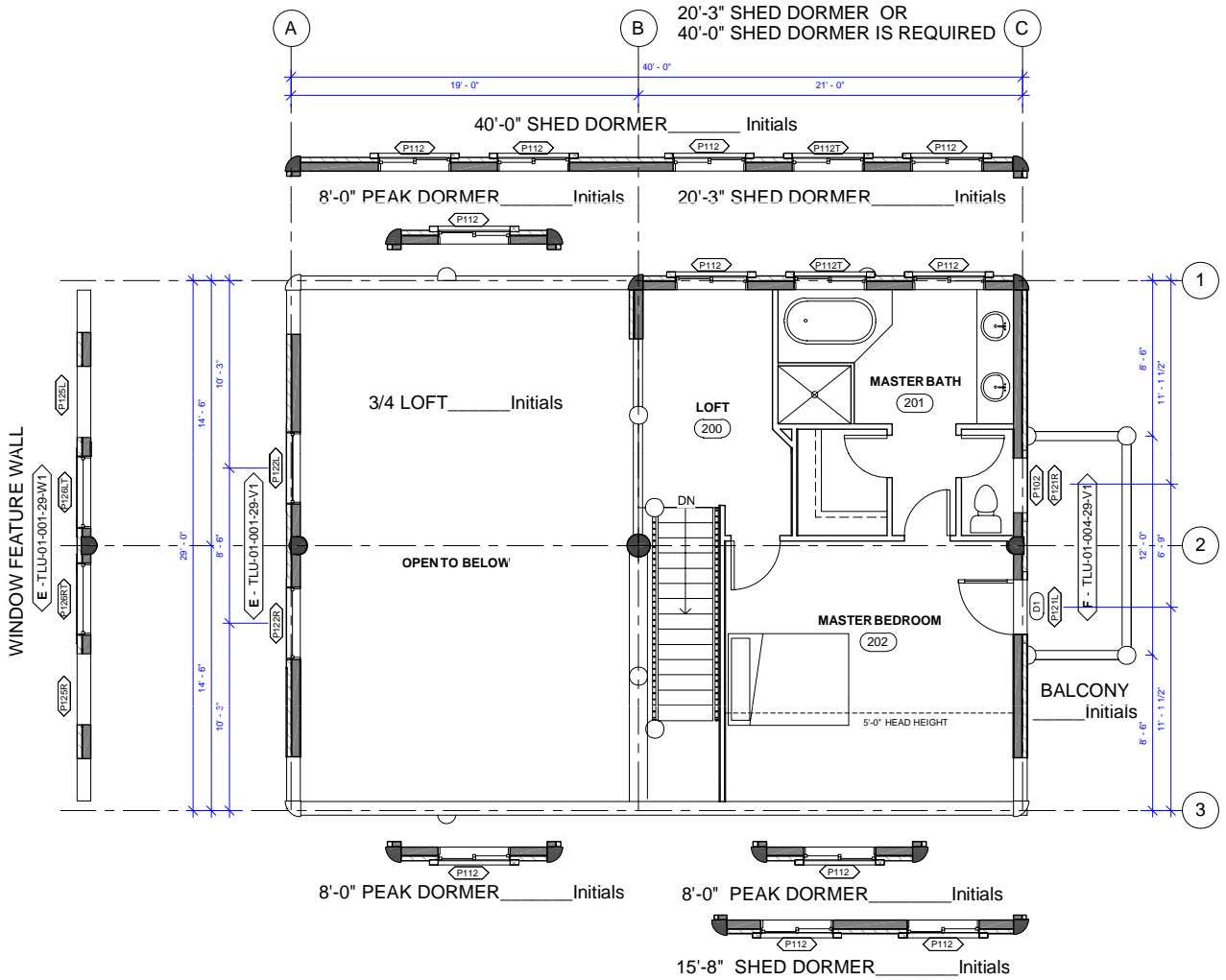


NOTE:  
20'-3" AND 40'-0" SHED DORMERS ARE NOT AVAILABLE  
ON SAME SIDE AS GABLE ENTRY SYSTEM

**OPTIONS SHOWN**  
BALCONY  
DORMER  
**OPTIONS AVAILABLE**  
DORMER OPTIONS SHOWN  
WINDOW FEATURE WALL  
**PLANS AS SHOWN WORKS WITH:**  
BIG HORN 3, 5, 6, & 7 BECAUSE OF  
STAIR DIRECTION.

467 SQ FT (> 5 FT)  
552 SQ FT TOTAL

**BIG HORN LOFT 5M**  
SCALE: 1" = 10'-0" V. 5.0



NOTE:  
20'-3" AND 40'-0" SHED DORMERS ARE NOT AVAILABLE  
ON SAME SIDE AS GABLE ENTRY SYSTEM

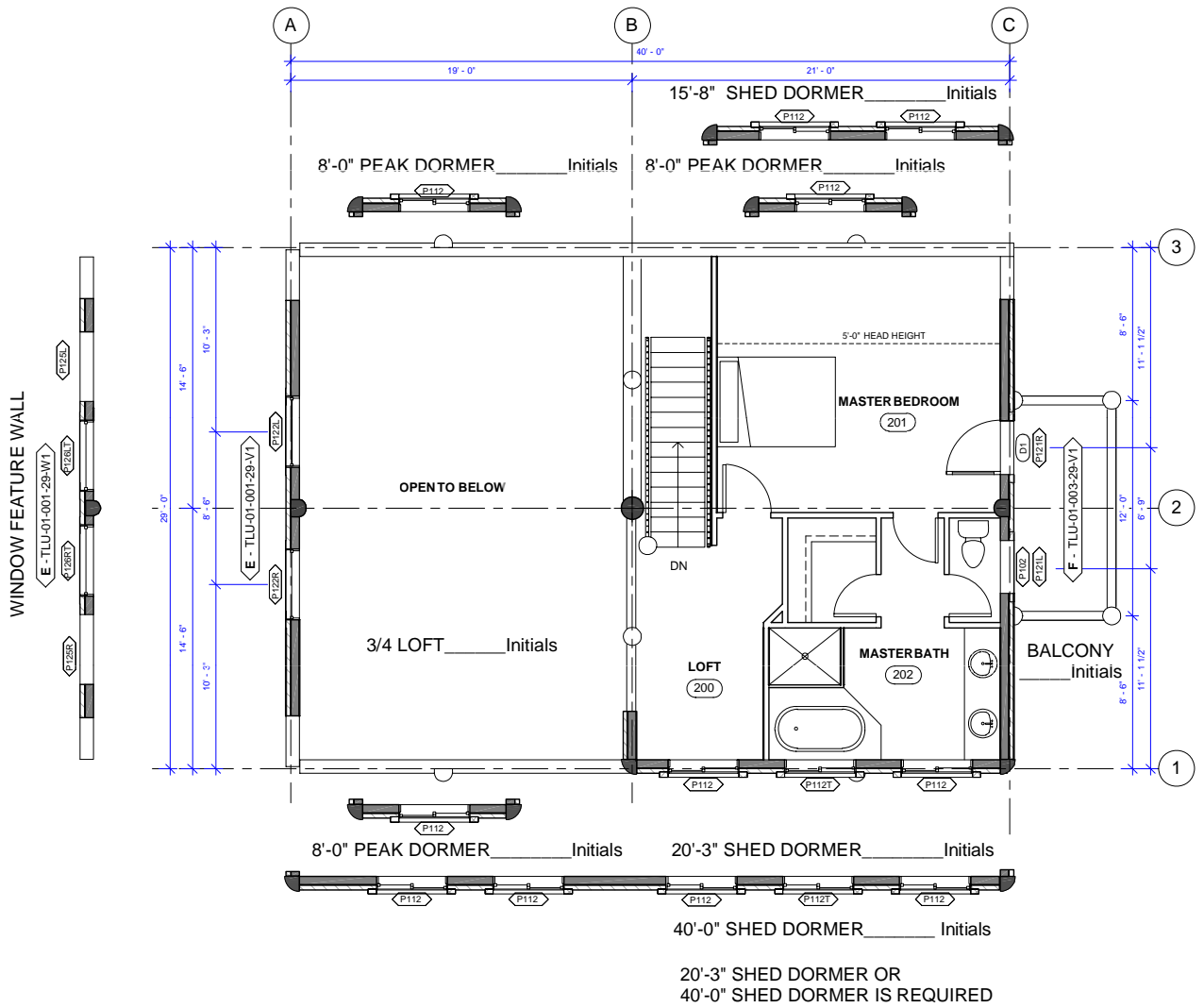
OPTIONS SHOWN  
BALCONY  
DORMER  
OPTIONS AVAILABLE  
DORMER OPTIONS SHOWN  
WINDOW FEATURE WALL  
PLANS AS SHOWN WORKS WITH:  
BIG HORN 1, 2, 4, 8, 9, 10,  
BECAUSE OF STAIR DIRECTION.

467 SQ FT (> 5 FT)  
552 SQ FT TOTAL

**WHISPER CREEK LOG HOMES**

**BIG HORN LOFT 6**

SCALE: 1" = 10'-0" V. 5.0



**OPTIONS SHOWN**  
 BALCONY  
 DORMER SHOWN  
**OPTIONS AVAILABLE**  
 DORMER OPTIONS SHOWN  
 WINDOW FEATURE WALL  
 PLANS AS SHOWN WORKS WITH:  
 BIG HORN 3, 5, 6, & 7 BECAUSE  
 OF STAIR DIRECTION.

467 SQ FT (> 5 FT)  
 552 SQ FT TOTAL

**NOTE:**  
 20'-3" AND 40'-0" SHED DORMERS ARE NOT AVAILABLE  
 ON SAME SIDE AS GABLE ENTRY SYSTEM

**BIG HORN LOFT 6M**  
 SCALE: 1" = 10'-0" V. 5.0