

NOTE:

FULL HEIGHT CHIMNEY MAY CONFLICT WITH PEAK DORMER

OPTIONS SHOWN
BALCONY

OPTIONS AVAILABLE
DORMERS SHOWN
WINDOW FEATURE WALL



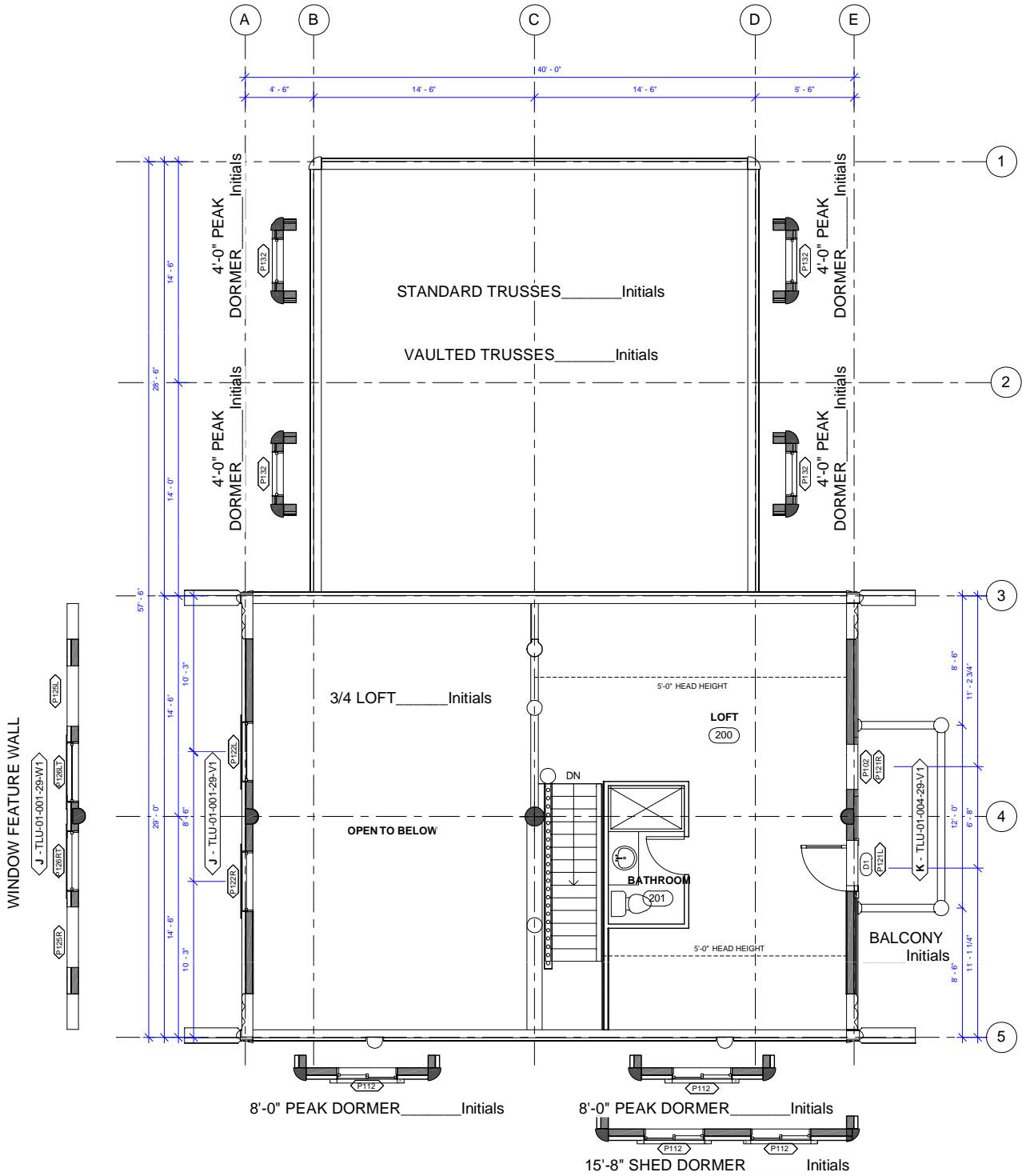
WHISPER CREEK LOG HOMES

ELK RIDGE LOFT 1

344 SQ FT (> 5 FT)
552 SQ FT TOTAL

SCALE: 1" = 10'-0"

V. 5.0



NOTE:

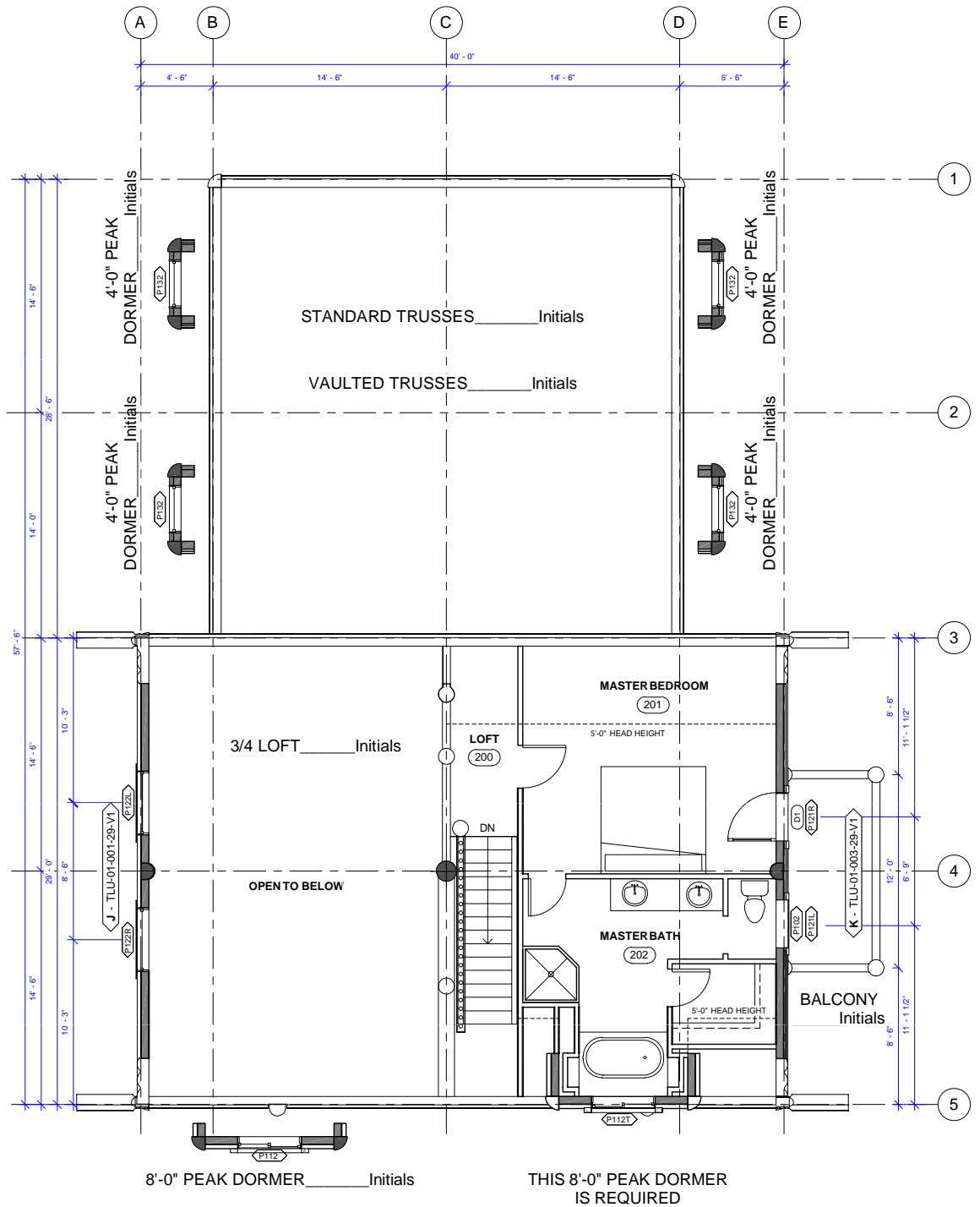
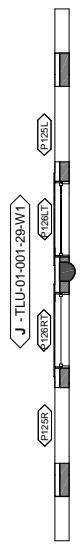
FULL HEIGHT CHIMNEY MAY CONFLICT WITH PEAK DORMER

OPTIONS SHOWN
BALCONY

OPTIONS AVAILABLE
DORMERS SHOWN
WINDOW FEATURE WALL

WHISPER CREEK LOG HOMES
ELK RIDGE LOFT 2
 344 SQ FT (> 5 FT)
 552 SQ FT TOTAL
 SCALE: 1" = 10'-0"
 V. 5.0

WINDOW FEATURE WALL



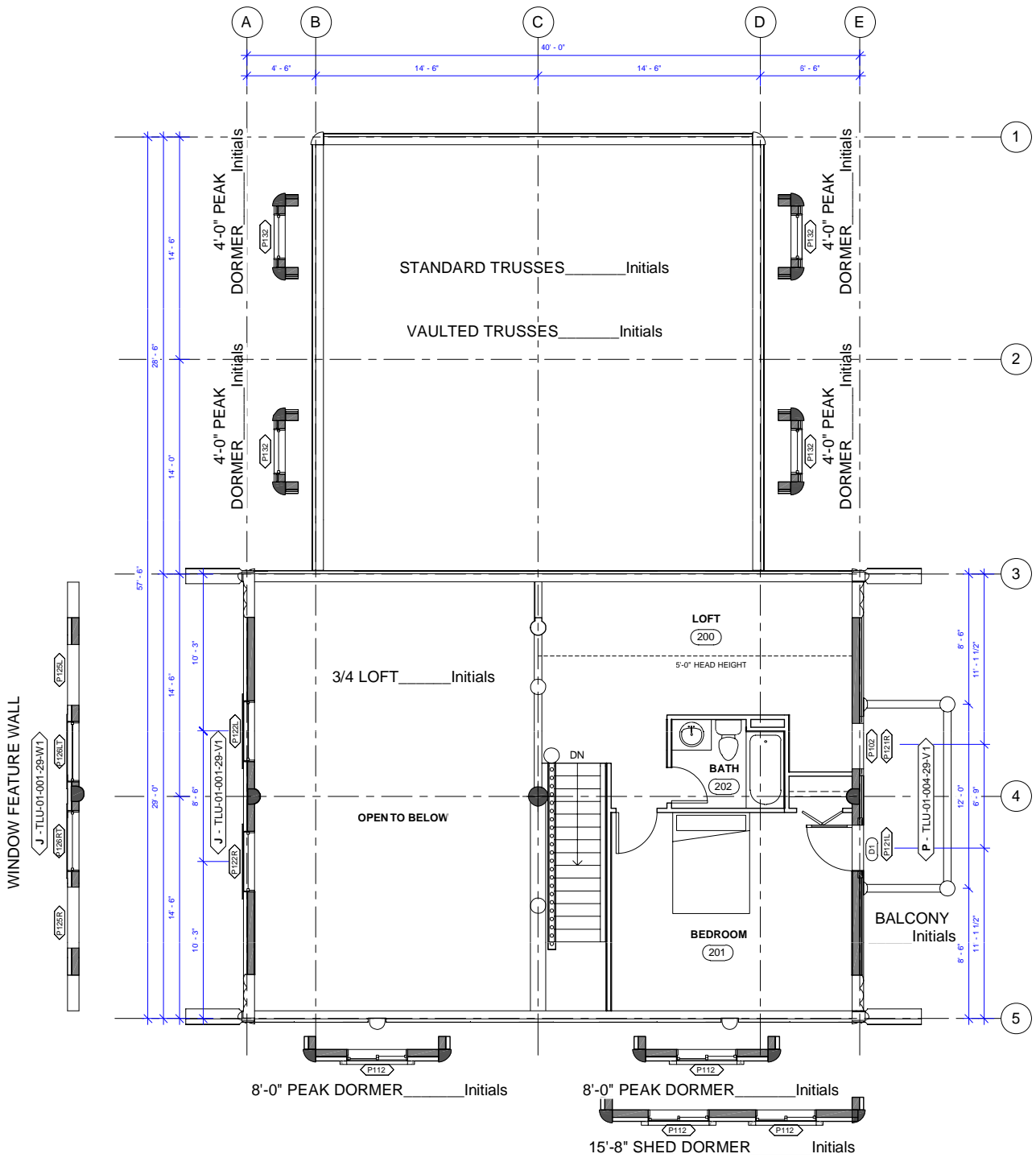
8'-0" PEAK DORMER _____ Initials

THIS 8'-0" PEAK DORMER IS REQUIRED

NOTE:
FULL HEIGHT CHIMNEY MAY CONFLICT WITH PEAK DORMER

OPTIONS SHOWN
BALCONY
DORMER
OPTIONS AVAILABLE
DORMERS SHOWN
WINDOW FEATURE WALL

WHISPER CREEK LOG HOMES
ELK RIDGE LOFT 3
379 SQ FT (> 5 FT)
552 SQ FT TOTAL
SCALE: 1" = 10'-0"
V. 5.0



NOTE:

FULL HEIGHT CHIMNEY MAY CONFLICT WITH PEAK DORMER

OPTIONS SHOWN
BALCONY

OPTIONS AVAILABLE
DORMERS SHOWN
WINDOW FEATURE WALL

WHISPER CREEK LOG HOMES

ELK RIDGE LOFT 4

344 SQ FT (> 5 FT)
552 SQ FT TOTAL

SCALE: 1" = 10'-0"

V. 5.0